

About CIE Schools in New Zealand

An information sheet for schools

April 2008

"We selected CIE for the Takapuna Grammar Centre for Business and Enterprise because it directly assesses Business Studies and Thinking Skills. We are very pleased with our decision and expect CIE to offer yet another pathway to university study." *Simon Lamb, Principal, Takapuna Grammar School*

"Here at Westlake we not only celebrate excellence but we expect it. We proactively sought to extend our upper tier and Cambridge has definitely provided the desired challenge. To be better than before is always possible and I have found boys to strive for great things when on our Cambridge pathway. We feel so strongly about it that we will be further extending the cohort that is sitting CIE in 2008 to 40% of our seniors sitting CIE external examinations." *Craig Monaghan, Headmaster, Westlake Boys' High School*

"We are a decile four school and two years ago we got 14 Scholarships, placing us at number 15 out of 151 schools. All of those students were doing CIE. Many of our students have received university scholarships as a result of their excellent results." *Grant Wright, Mathematics Teacher, Western Heights High School*

What is CIE?

CIE stands for "University of Cambridge International Examinations" and was formally established in 1998. The University of Cambridge owns and operates CIE through its non-profit division, Cambridge Assessment, which is one of the largest and oldest examining bodies in the world. It oversees three examination boards – OCR (Oxford, Cambridge and Royal Society) which assesses UK students, another assesses ESOL students worldwide, while CIE, which is the international branch, assesses students in over 150 countries across the world.

CIE is the largest global provider of qualifications, with examinations taken annually by over one million students.

CIE is characterised by international portability, bench marking of standards, transparency in reporting outcomes and flexibility. There are rigorous subject-based curricula with external assessment that is standards based.

ACSNZ

ACSNZ stands for the Association of Cambridge Schools in New Zealand. The Association was set up in 2002 as a professional forum and support network for schools in New Zealand offering CIE. All CIE schools generally become members of the Association. The Association organises an annual Awards Ceremony for students who have achieved outstanding academic results in CIE during the previous year. In 2007, there were 40 prizes awarded to students who were Top in the World in their subject and a further 44 prizes for students who were Top in New Zealand.

ACSNZ also runs a biennial Conference for member schools, attended by teachers, administrators and principals,

which includes international speakers, as well as workshops on topics of interest.

ACSNZ was responsible for establishing examinations in a number of subjects that were popular in New Zealand, but not offered by CIE. Three of these subjects (AS Classical Studies, AS Japanese and IGCSE Japanese) have been taken over by CIE because of their popularity. Subjects currently offered through ACSNZ are AS History of Art, AS New Zealand History, AS Latin and AS Drama. ACSNZ continues to monitor both the subject and training needs of New Zealand schools and to work with CIE to implement systems to meet these.

CIE Schools in New Zealand

Currently 48 New Zealand secondary schools offering CIE are members of ACSNZ. Some offer a full range of subjects while others may offer only 1-2 subjects. Some offer CIE exclusively while others offer CIE alongside NCEA. Interestingly, statistics show that around 90% of students achieving success in the Scholarship Examinations from CIE schools are studying CIE, often despite course differences.

Twenty-five schools are in the Auckland region with others throughout the country; there are 15 boys' schools, 6 girls' schools and 27 co-ed schools in total; and 28 state schools and 20 independent schools.

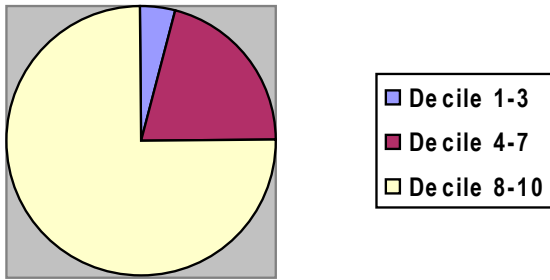
All kinds of schools have registered to offer CIE, including low decile schools. There are 2 schools in the decile range 1-3 and 10 schools in the decile range 4-7. The rest are in the range 8-10.

For further information please contact us.

Association of Cambridge Schools in New Zealand (Inc)

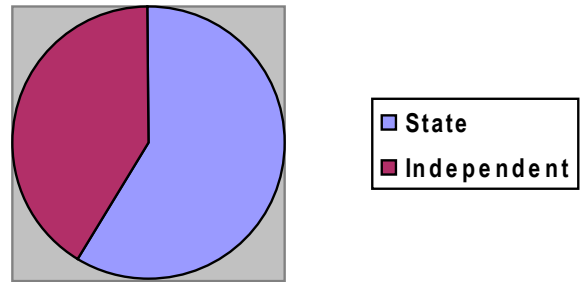
P O Box 7247, Wellesley Street, Auckland 1141, New Zealand Tel +64 9 638 0550 Fax +64 9 638 0552
Email acsnz@ags.school.nz www.acsnz.org.nz

Decile Rating of CIE Schools



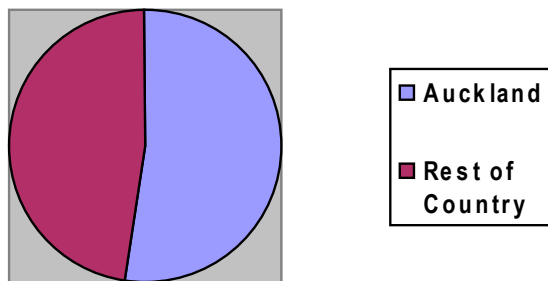
There are 2 schools in the decile range 1-3 and 10 schools in the decile range 4-7. The remaining 36 are in the range 8-10.

Ownership of CIE Schools



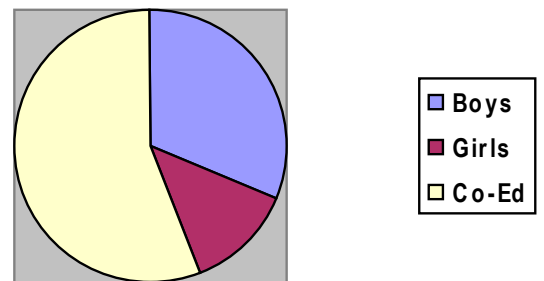
There are 28 state schools and 20 independent schools.

Location



Twenty-five schools are in the Auckland region with others throughout the country.

Type of School



There are 15 boys' schools, 6 girls' schools and 27 co-ed schools.